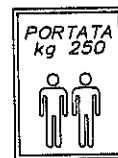
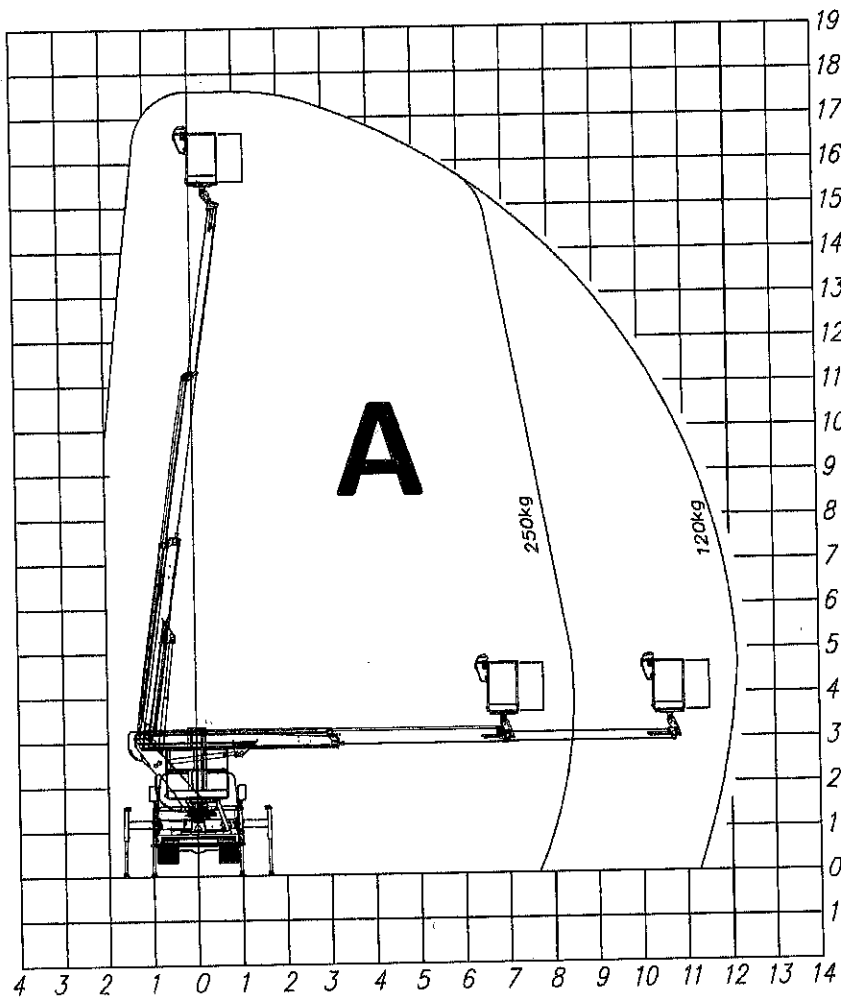


ZONE DE TRAVAIL MAXIMALE
 Avec la nacelle en PE/VTR (Portée 250kg)



CARATTERISTICHE TECNICHE - TECHNICAL SPECIFICATIONS



ALTEZZA MAX DI LAVORO - MAXIMUM WORKING HEIGHT	17,7m
ALTEZZA PIANO DI CALPESTIO - WALKING FLOOR HEIGHT	15,7m
SBRACCIO MAX DI LAVORO	12,2m
PORTATA - MAXIMUM CAPACITY LOAD	250kg

DIS. _____ APPROV. _____

PIATTAFORMA
 AERIAL WORKING
 PLATFORM

18T max-VTR/PE
 MAE+H 2.0

TOLLERANZA SULLE PRESTAZIONI INDICATE $\pm 3\%$
 IN RAGIONE DELL'ALLESTIMENTO E DEGLI ACCESSORI

THE WORKING DIAGRAMS CAN VARY BY $\pm 3\%$ DEPENDING
 ON THE TYPE OF INSTALLATION AND ACCESSORIES

I dati e le dimensioni sono forniti a titolo indicativo e non impegnativo.
 Data and descriptions are approximate and not binding.

Toutes les données et descriptions sont fournies à titre indicatif, sans engagement.
 Angaben und Beschreibungen sind nicht verbindlich.

CODICE **N015.0959**

DATA 01/06/2018 MOD. _____